



Caledonian

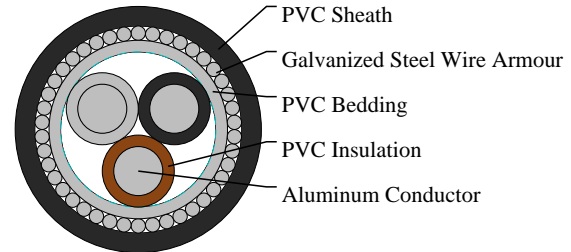
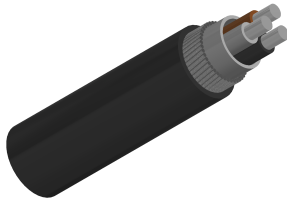
BS 6346 Cables

www.caledonian-cables.com

marketing@caledonian-cables.com

BS 6346 PVC Insulated Cables, 600/1000V

Three-core 600/1000V cables with solid aluminum conductors
3C16



APPLICATIONS

These power and control cables are used for electricity supply in low voltage installation system. They are well adapted to underground use in industrial applications where chemical and mechanical protections are needed (refinery areas, chemical plant...).

STANDARDS

BS 6346

FIRE PERFORMANCE

Flame retardant	IEC60332 part 1, BS4066 part 1
-----------------	--------------------------------

VOLTAGE RATING

600/1000V

CABLE CONSTRUCTION

Conductor: Solid Aluminum conductor to BS 6460, IEC 60228

Insulation: PVC (Polyvinyl Chloride) type T11

Filler (optional): PVC or Polypropylene yarn

Binder Tape (optional): Polyester (Mylar) tape

Inner Sheath/ Bedding: PVC (Polyvinyl Chloride)

Armour: SWA (Galvanized Steel Wire or Tape Armour)

Outer Sheath: PVC (Polyvinyl Chloride), type TM1

COLOUR CODE

Insulation Colour: Brown, Black, Grey

PHYSICAL AND THERMAL PROPERTIES

Temperature rating: -20°C to +60°C

Bending radius:

Single core: 10 x overall diameter



Caledonian

BS 6346 Cables

www.caledonian-cables.com

marketing@caledonian-cables.com

Multicores: 8 x overall diameter

DIMENSION AND PARAMETERS

No. of Cores × Cross- sectional Area	Nominal Insulation Thickness	Nominal Bedding Thickness	Nominal Sheath Thickness	Nominal Steel Wire Armour Diameter	Approx. Overall Diameter (Extruded Bedding)	Approx. Overall Diameter (Taped Bedding)	Approx. Weight
No. × mm ²	mm	mm	mm	mm	mm	mm	kg/km
3x16	1	0.8	1.6	1.25	21.7	21.7	925